

448 000 €

Buying apartment

4 rooms

Surface : 93 m²

Year of construction : 2012

Exposition : Ouest

View : Jardin

Hot water : Individuelle électrique

Inner condition : Excellent

Standing : Demi-luxe

Building condition : Bon

Features :

lift, double glazing, gated, calm, Porte blindée, residential

3 bedroom

1 terrace

2 bathrooms

1 WC

Legal information

448 000 €

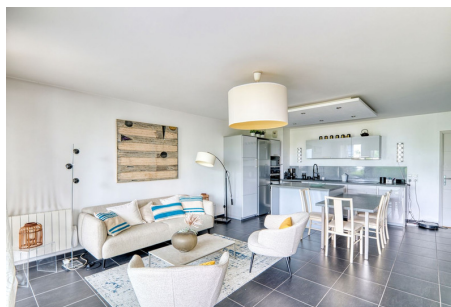
Fees paid by the owner, well condominium (43 lots in the condominium), annual current expenses 1 540 € (128 € monthly), no current procedure, information on the risks to which this property is exposed is available on georisques.gouv.fr.



Apartment 18 Lyon

Very nice 4-room apartment with large terrace - Lyon 5th / Tassin To discover in the popular district of rue des Noyers, on the edge of Tassin, this magnificent 93 m² apartment located in the luxury residence Les Allées du Bois (SLC PITANCE). Built in 2013, this secure residence offers an exceptional living environment with its closed wooded park. Surface area: 93 m² + covered terrace of 16 m² facing west. Property type: 4-room apartment. Parking: Large double closed and secure garage with electrical outlets for electric vehicles. Construction: High quality building dating from 2013. A spacious 38 m² living room with a modern open fitted kitchen (BOSCH/SIEMENS appliances) and a central island, ideal for your moments with family or friends. 3 comfortable bedrooms, including a master suite with dressing room and shower room (double sink). The other two bedrooms, one of which opens onto the terrace, are located in a separate sleeping area with a...

Energy class (dpe) : C - Emission of greenhouse gases (ges) : A
Estimated annual energy between 1000 and 1150 € (reference year 2024)
Document non contractuel - 25/06/2025



Caron Immobilier - 689 Avenue de Cannes - 06210 Mandelieu-la-Napoule

T. +33 (0)4 93 47 59 51 - P. +33(0) 6 25 31 33 86 - agence@caronimmobilier.fr - www.caronimmobilier.fr

RCS Cannes B 930 676 051 - SIRET 930 676 051 00012 - Document non contractuel